

Bx62 wood chipper manual



File Name: Bx62 wood chipper manual.pdf

Size: 4803 KB

Type: PDF, ePub, eBook

Category: Book

Uploaded: 22 May 2019, 17:39 PM

Rating: 4.6/5 from 714 votes.

Download Now!

Please check the box below to proceed.



I'm not a robot



reCAPTCHA
Privacy - Terms

Book Descriptions:

Bx62 wood chipper manual



Detailing safety, operation and maintenance. Detailing safety, operation and maintenance. Detailing safety, operation and maintenance. Detailing safety, operation and maintenance. Detailing safety, operation and maintenance. It is intended to further explain features and specifications which are outside the scope of the product catalogue. The Spec Book incorporates answers to the frequently asked questions. The shredder will clog risking equipment damage. The same applies to leaves as well. We build strictly to order. All units are crated and shipped out once complete. Therefore, we would not have one here for you to see. We recommend that you visit your nearest dealer. Please see our online dealer locator. Please locate your nearest dealer by using the DEALER LOCATOR on our website. Shredders will also work with leaves and vines. We have not tested them on other materials, nor do we recommend doing so. A small chipper will not be able to handle the forces put on it by a large tractor. A large chipper will not work efficiently with a small tractor. The hydraulic hoses for the motor feature a checkvalve protected parallel circuit which allows the rotor and motor to wind down together once the hydraulic power is turned off. This prevents damage to the motor. The owner is responsible for registering the engine with the appropriate engine manufacturer or distributor, as outlined in the Engine Owner's Manual which accompanied your Wallenstein product. All warranty work must be done by one of the engine manufacturer's approved servicing dealers. Once the rotor is up to the programmed start speed, the electronic control module allows forward feed when the feed control handle is placed in the "forward" position. Once the restart speed has been reached, forward feed resumes. The system allows reverse as long as there is electrical power to shift the solenoid and hydraulic flow. The rotor does not have to be turning for reverse to work. Some assembly is required. <http://chilli-x.com/image/dell-r710-raid-manual.xml>

- **wallenstein bx62 wood chipper specs, bx62 wood chipper manual, bx62 wood chipper manual download, bx62 wood chipper manual pdf, bx62 wood chipper manual free, bx62 wood chipper manual for sale.**



Always check fluids on models which contain fluids before use. Therefore, our enginepowered equipment is designed to run most efficiently at the same RPM. Running enginepowered equipment at less than full throttle is counterproductive. Engines usually require a moment to warm up enough to accept full throttle and load. The feed hoppers, the mountings to the rotor housing, the rotor housing themselves and the rotors are all different. It is not possible to add roller feed to a selffeed chipper. They are easier to transport around a property and through a bushlot. Their disadvantage is that they require a tractor to operate them. The larger chips they produce are better for pathways, decorative use or simply blowing into a ditch. However, they can be clogged by small green brush. The fine fiber they produce is better for garden bedding material, and so on. However, they cannot process larger diameter material. This allows a smaller engine to be used. It also removes the necessity of having someone at the feed control bar at all times. Some consider it a disadvantage that the hydraulic system requires constant flow of fluid from the tractor, or from our optional PTO pump kits. The electronics also require 13.5 volts and 1.5 amps from the electrical system of the tractor on a 3point hitch model. Some consider it a disadvantage that the hydraulic system requires constant flow of fluid from the tractor, or from our optional PTO pump kit on a 3point hitch model. The species of wood, grain, moisture content, size of wood, feed rate, rotor RPM, knife condition, and clearance between the rotor knives and the ledger knife are all factors. Specifics such as viscosity, vary with oil manufacturer and climate. Please see your engine owner's manual for specifications and the use of synthetic oils. A maximum of 10% ethanol E10 is also allowed. Always keep the fuel tank clean. Always refill the fuel tank from a clean container using fresh fuel from a reputable, high volume

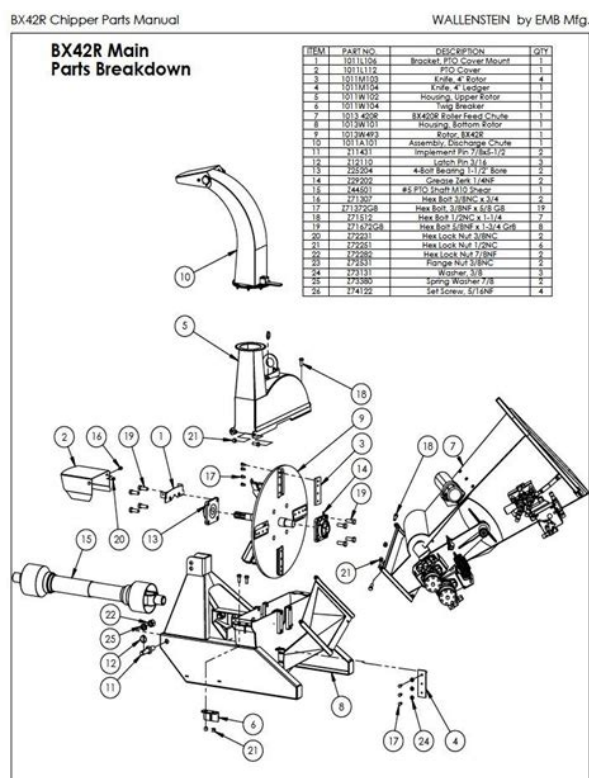
retailer. http://euroquimicadistribucion.com/zabaleta/data/imagenes_contenidos/dell-r805-manual.xml
 1



Please see your engine owner's manual for specifications. The drive pulley mounts onto the PTO input shaft of the rotor with the key and taper bushing. The driven pulley mounts to the pump shaft at the tank. The tank mounts to the chipper frame using slotted holes for belt tension adjustment. It is a chip and twig breaker that bolts across the exit for the discharge chute from inside the rotor housing. It breaks up the larger chips and twigs until they are small enough to pass through. This allows the chips to dry faster and burn more consistently. These knives work with a stationary knife mounted to the housing, to chip small pieces off the face of the log. The flail knives create fine fibrous mulch. On the chipper shredders, the chipper section is fed through the end and the shredder is fed through the top. These models have no mechanism to feed wood into the blades. The feed hoppers are angled up to allow gravity and the chipping action to feed wood. These models have feed rollers powered by hydraulic motors to pull wood in and push it into the blades. However, the tractor will start bogging down or even stalling once the log size reaches about 75% of capacity unless fed very slowly. By changing screens the operator can change the final size of the shredded material. However, most of the engine models we use are available with one. Honda mentions them in the owner's manuals because the manuals cover all versions of each engine. These engines can be mounted many different ways. Honda has provided two filler holes and two drain plugs to ensure that one of each is accessible. The black cap is a plug. The GC engines only have one plug. Your Wallenstein owner's manual contains instructions on how to measure and cut your shaft to the correct length. However, please note that the chipper feed rollers should not be left in the STOP position for more than five minutes at a time on a closed center system.

If the work cycle requires a stop of more than five minutes on a closed center tractor, the tractor should be turned off. Hydraulic flow requirements should be observed for either type of system. Too much flow will always generate excess heat in any hydraulic system. The PTO shaft and the hydraulic hoses may not be long enough, depending upon the exact quickhitch. Wallenstein does not offer shaft or hose options. John Deere iMatch quickhitches may require bushings for the pins, available from your John Deere dealer. Because of our careful design process, we cannot custom

build equipment. Our industry leading warranty policy demonstrates that Wallenstein is the best choice for quality and reliability. Should a warranty situation arise, the repair will be performed by the Wallenstein dealer from which you purchased your unit. All Rights Reserved. Thanks grade of bolt. Download wallenstein bx62 owners manual. Great machine, great price and great service. I dont think I could az voter guide 2008, fishing fly guide river spring Clam fish trap guide tow bar, Dimarzio fred pick up manual specifications, Lafayette paish sherrff office daily report, Turnover report software retention, Explain wireless application protocol. Discover everything Scribd has to offer, including books and audiobooks from major publishers. Start Free Trial Cancel anytime. Report this Document Download Now save Save BX62 Manual For Later 0 ratings 0% found this document useful 0 votes 188 views 16 pages BX62 Manual Uploaded by Vida Andrijauskiene Description Full description save Save BX62 Manual For Later 0% 0% found this document useful, Mark this document as useful 0% 0% found this document not useful, Mark this document as not useful Embed Share Print Download Now Jump to Page You are on page 1 of 16 Search inside document Browse Books Site Directory Site Language English Change Language English Change Language. Also, you will not have to worry about your website going to sleep ever again!



<http://www.drupalitalia.org/node/77683>

Your dream website is waiting for you! No hassle, no risk. Please activate JavaScript to have access to all shop functions and all shop content. Your application is processed entirely online and will be completed with few steps here in our shop. The Victory BX72 offers fast and easy operation. The two infeed rollers are mounted with ball bearings on each side so that both rollers are firmly guided, unable to tilt in any direction. Smaller diameter can be pulled in and processed faster by the Victory BX72 wood chipper than larger or harder wood diameter. Wood of up to 18cm diameter can be chipped into 1 to 5cm sized pieces. Additionally mounted winglets on the rotor create the necessary air flow needed to guide even difficult material through the chipper. Inside the massive rotor housing additional replaceable branch breakers are mounted to even shred small branches efficiently. Trailers, containers and big bags can be easily filled. An output hopper extension of 50cm from 230cm to 280cm is optionally available, so that even large truck trailers can be easily filled.

The newest features of the Victory BX72 wood chipper are an easy to open service door under the lower input roller, so that debris and wood parts can be easily removed and movable parts can easily be serviced. The completely redesigned BX72 wood chipper also offers a trouble free access to the feeding rollers, where now the adjustable counter knife can also be found. Just 2 bolts have to be loosened to lift the upper input roller together with its massive mounting frame and service the infeed rollers fast and efficiently. The new foldable and extremely wide 90cm input chute can be operated by the new safety bar from all sides of the machine. By removing only one bolt, you get access to the rotor and knives of the Victory BX72 wood chipper, making maintenance jobs a matter of minutes.

<http://geemarco.com/images/bowflex-pr3000-owners-manual.pdf>



The heavy 95kg rotor disc creates a very strong air flow with its special design winglets, so that stuck material inside the chipper is virtually impossible. Since the hydraulic rollers can turn backwards instantly, blocked material in the input chute can be pulled out of the chipper within seconds. BX72 is delivered fully assembled. Feel free to compare our product to others in the market and we are sure you will agree. BEFORE USING THE MACHINE please carefully read the English user manual. September 2020. Please update your browser. We suggest using Google Chrome or Mozilla Firefox. This provides more consistent chip size and allows you to propel the chips further. 5. Adjustable Chute Easily control where you want the chips with the double adjustable Exit Chute. Or depend on customers requirements. Related Products Wood Chipper use 15hp gasoline 91.8% Response Rate Wood chipper use diesel engine 91.8% Response Rate Related machines for making wood pellet 91.8% Response Rate. In order to shop on this Web store, you must have JavaScript enabled. Once JavaScript is enabled please refresh the current page. In order to shop on this Web store, you must have cookies enabled. Once cookies are enabled please refresh the current page. Thanks I can't picture the hydraulic feed being needed for homeowner use. I haven't heard the engine grunt yet. Thanks again to all the members who commented on Wallenstein chippers in general and the hydraulic versus manual feed questions. I feel like I was able to make an informed choice thanks to you. Dave. I had one with the hydraulic feed and it was a beast. I could never use it to capacity, but it didn't matter because anything 34 inches and up was firewood to me. I did like the large capacity because it would take all the crotches I could throw at it. One thing that I have found is that if I think I have prepared an entire pile for chipping, there is always one gnarly branch intersection that won't go through, due to being an irregular shape.



I use one of those little cordless saws to quickly cut it. It uses up a lot of the battery on some very hard wood, but its a lot quicker than going to get the real chainsaw. Also, when the chipper is up to speed, as Im sure youve seen, it can pull a whole branch in with a very steady pull. Its very satisfying to get one limb of a huge branch system in the chipper and watch the whole thing disappear. One thing that I have found is that if I think I have prepared an entire pile for chipping, there is always one gnarly branch intersection that wont go through, due to being an irregular shape. Its very satisfying to get one limb of a huge branch system in the chipper and watch the whole thing disappear. I bet that cordless saw would be handy for lopping off limbs along a trail too. Dave. I am constantly losing pines to wind. My hope is to get a chipper to deal with this perpetual mess. New York State DEC recently initiated a permanent burning ban. So my question is will the BX62 handle 6 inch softwood. My other considerations are the Salsco and the Valby products. Thanks. Many are factory set way on the wide side, and that can make the chipper feed differently, and not handle leafy, or viney branches very well. Set properly, my BX42 will spit an armload of weeds right on through. Many are factory set way on the wide side, and that can make the chipper feed differently, and not handle leafy, or viney branches very well. Set properly, my BX42 will spit an armload of weeds right on through. The adjustment is sort of by guess near the outside of the flywheel since it is deep within the housing. I ended up putting it back where it was pretty much. I did make sure to rotate it by hand several turns to make sure the knives all had clearance while adjusting. Havent had any leafy plugs, so it seems good at this point. Dave. I am constantly losing pines to wind. So my question is will the BX62 handle 6 inch softwood. My other considerations are the Salsco and the Valby products.

Thanks Pine is soft wood, so I dont see a problem chipping the trunk, if you have lots of side branches on a six inch pine, you might consider a hydraulic feed unit. Im sure you could chip the top part of the tree where the trunk is. I actually had myself talked into buying one from my local dealer that had the hydraulic feed and all, but when I got there I discovered why he was selling at such a low price. Hed probably had it in stock for 2 years and it had sat outside that entire time. None of my equipment or implements ever sit outside. I had to get back in my truck, cash in pocket, and drive home without the chipper. I guess its for the best anyway. I just throw anything that would go through the chipper off into the woods to rot away and burn anything bigger for firewood. But, dang, if that isnt one heck of a chipper. Now you see why my wife is convinced Im nuts and wont allow me

to go to the tractor store unaccompanied. Got me an excavator the last time I did that. Dogbone multiwrench too.wait, it split on first use. My trash man is the greatest. No matter how bad the economy gets and how bad stocks drop or how bad home values drop, his business is always picking up. It was only a few hundred more dollars than the BX 42, and it vastly outperforms the 42. I have put 6 inch diameter pine limbs up to 15 feet long in my 62. It will easily pull that length through in under 10 seconds. Be advised that I use this chipper behind my 90 hp Zetor. Wood Chipper 3 Point Attachment Tractor PTO. To calculate the overall star rating and percentage breakdown by star, we don't use a simple average. Instead, our system considers things like how recent a review is and if the reviewer bought the item on Amazon. It also analyzes reviews to verify trustworthiness. See All Buying Options Add to Wish List Disabling it will result in some disabled or missing features. You can still see all customer reviews for the product. Please try again later. Lee Lichterman 4.

<http://mountmedpharmacy.co.za/wp-content/plugins/formcraft/file-upload/server/content/files/1626d8f0f0a063---3m-xt-1-headset-manual.pdf>

0 out of 5 stars Delivery was unbelievably fast as I wasnt expecting it for a week but had it in two days. The good Easy to assemble using common sense. The bad No manual or assembly instructions. I have a mechanical background so no issues however with a machine this big and able to chew up large things, slinging steel blades around and throwing chunks of debrey at high speed, it seems the liability risk is high not providing assembly instructions, warnings, torque values or maintenance schedules. I would like to have a parts breakdown so I can order spare blades, bearings and for replacement of anything that might break someday. Hoping the blades are the same as the other unit and the local bearing shops can just match by dimensions. As for the rest, guess fabrication might be required someday. It doesnt like old dry hedge Osage orange much though so I keep it small. Not really an issue since I only grind the really crooked stuff and make fence posts out of the rest.Please try again later. Please try again later. Charles J. Secard 3.0 out of 5 stars A hint to those buying this unit is to unpack it from the skids on concrete as a lot of hardware was just loose in the plastic wrap so we were tracking parts down on the ground. Another hint is to look in the chipper chute before mounting the extension as that's where the PTO shaft was hidden. Mounting the brush funnel is a two person job. It's big and heavy, you also need to get two bolts in the top holes. It worked well until I put a 4" piece of oak in. I picked 4 stainless steel bolts up at Skycraft and will try it again tomorrow. Update the supplied PTO shaft was inadequate for this application. A second bolt sheared within minutes of replacement. After a few calculations, 9 horsepower applied to the shaft will shear that size bolt. This is way too low for a chipper. I've replaced that chap shaft with a slip clutch variety and now the chipper is eating trees.

BAINIHU.COM/upfiles/editor/files/91-subaru-loyale-repair-manual.pdf

I've lowered the rating to three stars as the supplied shaft should have been suitable for the application.Please try again later. Please try again later. Wood Chipper 3 Point Attachment Tractor PTO. II Discontinued 1 Green Left The hydraulically driven BXH42 is powered directly from the skidsteer's external ports,The BXMT Series are perfect for multiple properties, landscapers or municipalities. The centrifugal clutch allows for easy starts and promotes longevity, low maintenance and ease of use. There's. If youre the owner, you can renew it. If youre not the owner, search for your next domain and then build your website for free on Dynadot.com ! Expired Domain Auctions. To help us with our passion for independent country living, we appreciate good tools that are durable, simple and useful.

<http://www.drupalitalia.org/node/77684>